

# BIGHORN CANYON NATIONAL RECREATION AREA



## Bighorn Canyon Junior Ranger Booklet



# How To Become A Bighorn Canyon Junior Ranger

## 1. Follow the Junior Ranger Code:

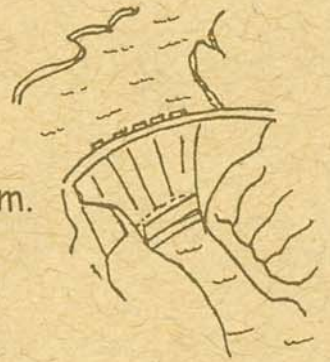
- Explore your national park areas.
- Collect litter while out exploring and dispose of it properly.
- Learn about animals, plants, and parks.
- Leave plants, animals and historical objects in the park undisturbed.
- Respect wildlife.
- Properly store food from bears and do not leave food unattended at any time.
- Take pride in America. Help keep the place we live clean, safe, and beautiful for everyone!

## 2. Check off activities as you complete them. To become a Junior Ranger, complete four of the activities listed in this booklet if you are between the ages of 6 and 9, or five of the activities if you are from 10 to 12 years old.

- Yellowtail Dam puzzle
- A Scavenger Hunt
- Historic Site Postcard
- Find and circle twenty words in the Word Search
- Cross off two lines in Bighorn Bingo
- The Bighorn River maze
- Journal page

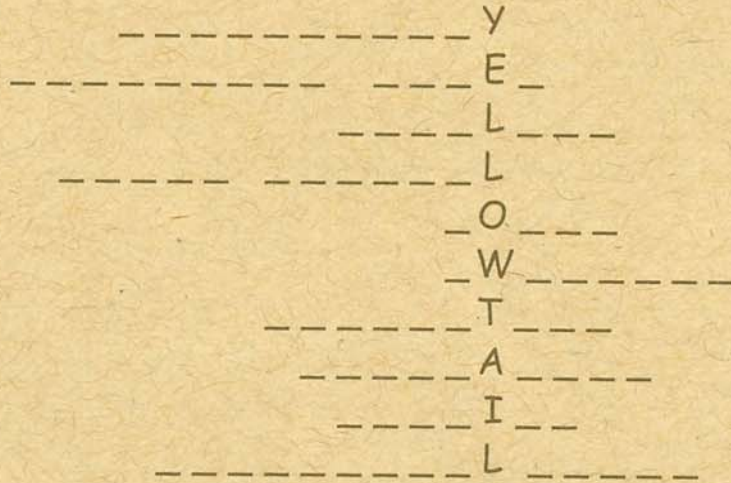
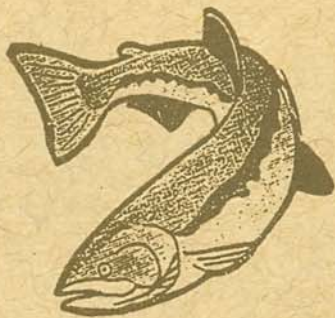


# Yellowtail Dam



At the north end of Bighorn Canyon is the \_\_\_\_\_ Dam.  
 It is named for the man who was the Superintendent of the Crow  
 Tribe in 1960, Mr. Robert \_\_\_\_\_.

The dam was built for flood control, irrigation, and electrical power. Recreational activities such as boating and fishing were an added benefit. Take the words from the list below and put them into the puzzle. Words that correctly complete the puzzle are just a few benefits of the Yellowtail Dam.



- Flood Control
- Mining
- Recreation
- Beauty
- Swimming
- Power
- Weather
- Municipal water (water for cities)
- Industrial water (water for Industry)

- Irrigation
- Wildlife
- Electricity
- Restrooms
- Shopping malls
- Airports
- Fishing







# A Scavenger Hunt

You can be a hunter in the Bighorn Canyon National Recreation Area without hurting any of the animals that live here. Scope out the answers to these questions by reading the information signs that you'll find around the park or by watching the movies available in the visitor centers. If you're really stuck, ask a ranger or a parent for some hints.

1. In what two states does Bighorn Canyon National Recreation Area lie?

\_\_\_\_\_ and \_\_\_\_\_

2. What are three special features of the Pryor Mountain Wild Mustangs?

a. \_\_\_\_\_

b. \_\_\_\_\_

c. \_\_\_\_\_

3. Name three "raptors" (birds of prey) that you can find in the Bighorn Canyon area:

a. \_\_\_\_\_

b. \_\_\_\_\_

c. \_\_\_\_\_

4. What is the largest raptor you might see here?

\_\_\_\_\_

How big might it be?

\_\_\_\_\_





# Historic Sites

There are many historic sites at Bighorn Canyon National Recreation Area. They range from the Bighorn Irrigation Headgate on the north end of the park to the Lockhart ranch on the south end. Visit one of these sights and design a postcard that shows what they look like.

Greetings from \_\_\_\_\_ !

Below, write a message to a friend or relative telling them about your visit to Bighorn Canyon.



What other activities did you enjoy while visiting Bighorn Canyon?

\_\_\_\_\_



# Bighorn Canyon Word Search

On the page to the right find the words that name things you can see or do in Bighorn Canyon National Recreation Area. Words may be written forward, backward, up and down, or diagonally. Circle each word as you find it, and cross it off the list below. You'll need a sharp eye to find all of the words listed. Find at least twenty to complete your Junior Ranger Booklet.

Bighorn Canyon

Bad Pass Trail

campground

desert

hiking

yucca plant

raptors

walleye

water skiing

boats

Barry's Landing

Bighorn Lake

Wyoming

Crow Story

Lockhart

Yellowtail Dam

Hillsboro

Montana

boat launch

trout

bighorn sheep

Ewing-Snell

juniper

sage

mustangs

fishing

Horseshoe Bend

Afterbay

picnic

Pryor Mountains

Big Metal

I found \_\_\_\_\_ words.



S G J M E N T U R E K A L N R O H G I B  
R G U L T T U F G W F I S H I N G Z Q F  
B A N F D S O J V H X I Y N J O I P R L  
I Y I A E C R O K M C A M P G R O U N D  
G X P W T H T H I L L S B O R O I B J C  
M Z E W G S V F G T H I O T R S N A B A  
E G R A O W U K E J S D A C M B D D O F  
T N U T B L X M Y I L H T A T S I P Z T  
A I P E N M Q U H K L J L P R Q A A B E  
L K D R B I G H O R N C A N Y O N S I R  
W I V S A O S P R W L K U Q R I C S G B  
B H Z K R H A T S A O N N T S S R T H A  
P C P I R G I T E L A N C H C R O R O Y  
I Q D I Y F J K S L M N H P D O W A R L  
C R M N S O A I H E W F C Z A T S I N O  
N S K G L N P J O Y Q Y B A D P T L S C  
I V T S A G E W E E R S O Y I A O B H K  
C B U T N A N V B U Y T X M A R R C E H  
C D N L D M B D E S E R T M I W Y U E A  
H O E W I N G S N E L L L V X N E S P R  
M J K F N D C E D C J K B Y W V G U R T  
C G V I G H I F Z D Y U C C A P L A N T  
J U Y H T P R Y O R M O U N T A I N S O  
B U X M A D L I A T W O L L E Y P M C A



# Bighorn Canyon Bingo

What makes the Bighorn Canyon Recreation Area so special? There are dozens of things. Here are a few things you won't want to miss:

**BIGHORN LAKE:** Bighorn Lake was once a river flowing across a level plain, but over thousands of years the river cut into the earth while the mountains were pushed upwards. The green color of the river is from the algae in the water.

**BIGHORN SHEEP:** Nearly lost to this area, the Bighorn Sheep returned in the early 1970's. Lambs are born down in the canyon in May or June and begin to come up to the park road with the ewes by the end of June. By summer, the rams are in higher country.

**CATTLE GUARD:** Placed in the road, these rails allow cars to pass but keep cattle and horses from crossing. The animals prefer firm ground and won't cross the rails.

**WILD HORSES:** The Pryor Mountain Wild Horse Range was the first in the U.S. About 150-200 horses, descendants of the horses brought to North America by Spanish explorers, roam the hills of the Pryor Mts. Look for the distinctive markings of these unique horses.

**FLOATING RESTROOM:** Look for the floating restrooms at Devil Canyon Overlook, day board 9, or Black Canyon. Boaters and fishermen can use these rather than pollute the lake.

**STATE BOUNDARY SIGNS:** Watch for Wyoming and Montana boundary signs that tell you that you're leaving one state and entering another.

**BOAT LAUNCH:** Horseshoe Bend, Ok-A-Beh, Afterbay, Three Mile, and Barry's Landing all have boat launches so that fishermen, water skiers, and boaters can enjoy the lake or the Bighorn River.

**DEVIL CANYON OVERLOOK:** From this spot, 1000 feet above Bighorn Lake, you can see the trail tracings of wild animals and look for birds of prey.

**BIRDS OF PREY:** The signs at the Devil Canyon Overlook tell about the "raptors" that live in this area. Can you spot any? Which is the largest? Afterbay wildlife viewing area is another place you may want to look.

**HISTORIC RANCHES:** There are four historic ranches in the park. At the Ewing-Snell Ranch you'll see a one-room log school building and Layout Creek where the Snell children used to play.

**BARRY'S LANDING:** You can camp, picnic, or launch your boat at Barry's Landing. How many boat trailers do you see in the parking lot?

**BIGHORN HEADGATE:** Before the Yellowtail Dam, the Bighorn Headgate was built to control the flow of water from the Bighorn River to the Bighorn Ditch for irrigation. To see what remains of the headgate, follow the dirt road west from the Afterbay campground to the headgate trail.

**LIMESTONE QUARRY:** About a mile up the Ok-A-Beh road on the right side you can see rock scarring and an old road. This was the limestone quarry that was mined to build Fort C.F. Smith in 1867. On the left, is where the kiln was built to process the stone.

**CAMPsites:** At Horseshoe Bend, Barry's Landing, and Afterbay Campgrounds you can see that each campsite is set up with its own table and fire ring.



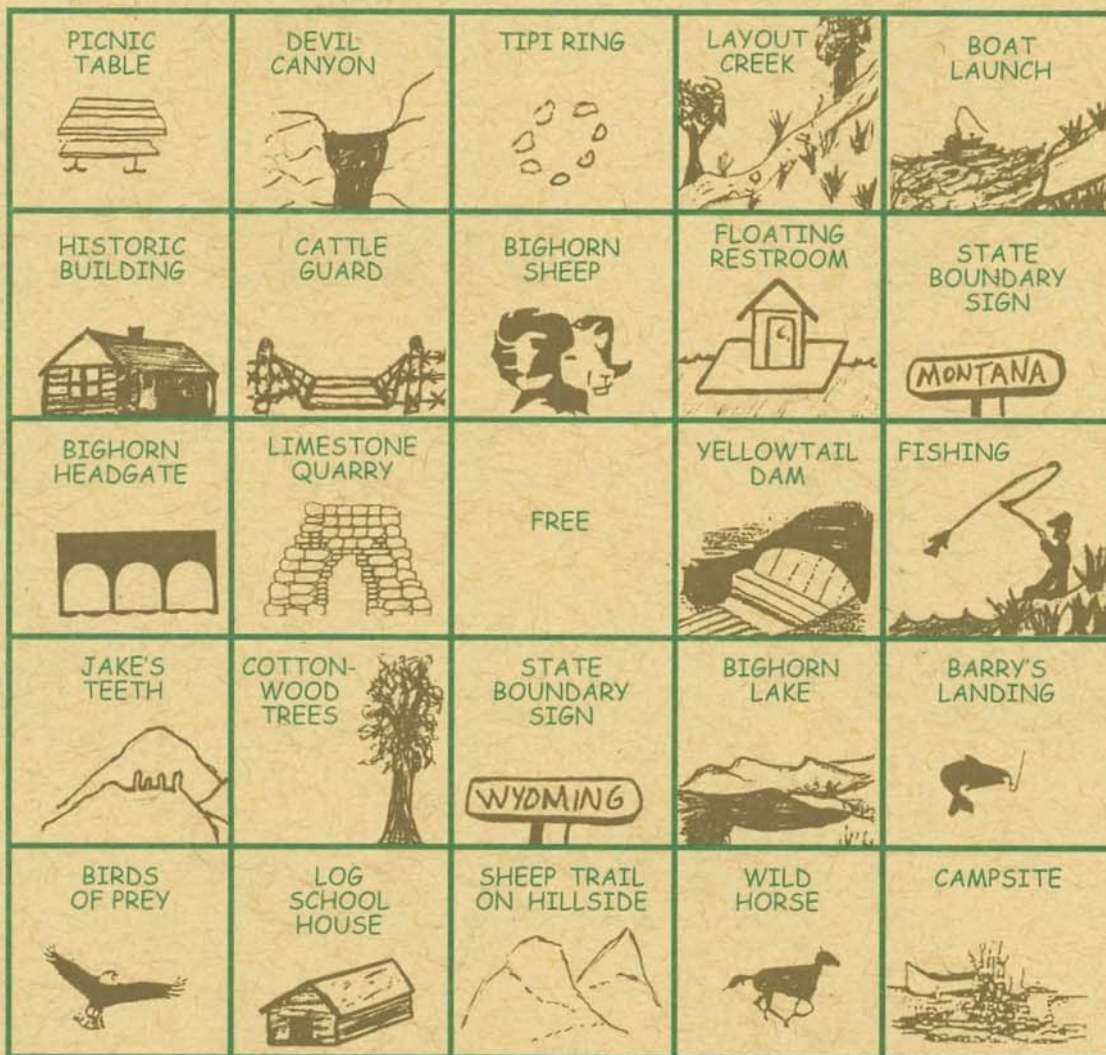
**TIPI RINGS:** In the canyon area you may be able to find rings of stones that indicate where a tipi once stood. The stones held down the lower edge of the tipi and kept the wind from blowing into the tipi.

**YELLOWTAIL DAM:** The Yellowtail Dam has tamed the once wild Bighorn River into the Bighorn Lake that is used for flood control, power, and electricity.

**JAKE'S TEETH:** When you leave Barry's landing, look up into the Pryor Mountains to the jagged rocks above. These rocks are named for an early settler. Legend says he had pretty bad teeth!

**COTTONWOOD TREES:** Alongside the creeks in the area are the "old growth" cottonwood trees that mark the path of the streams. Because of their deep tap roots, these trees can survive in this harsh desert environment as well as many other places.

Cross off each square on the grid as you see the things in the park. Can you cross off five in a row, either vertically, horizontally, or diagonally? Can you find enough to make an X or + on the grid? Can you find ALL the items?

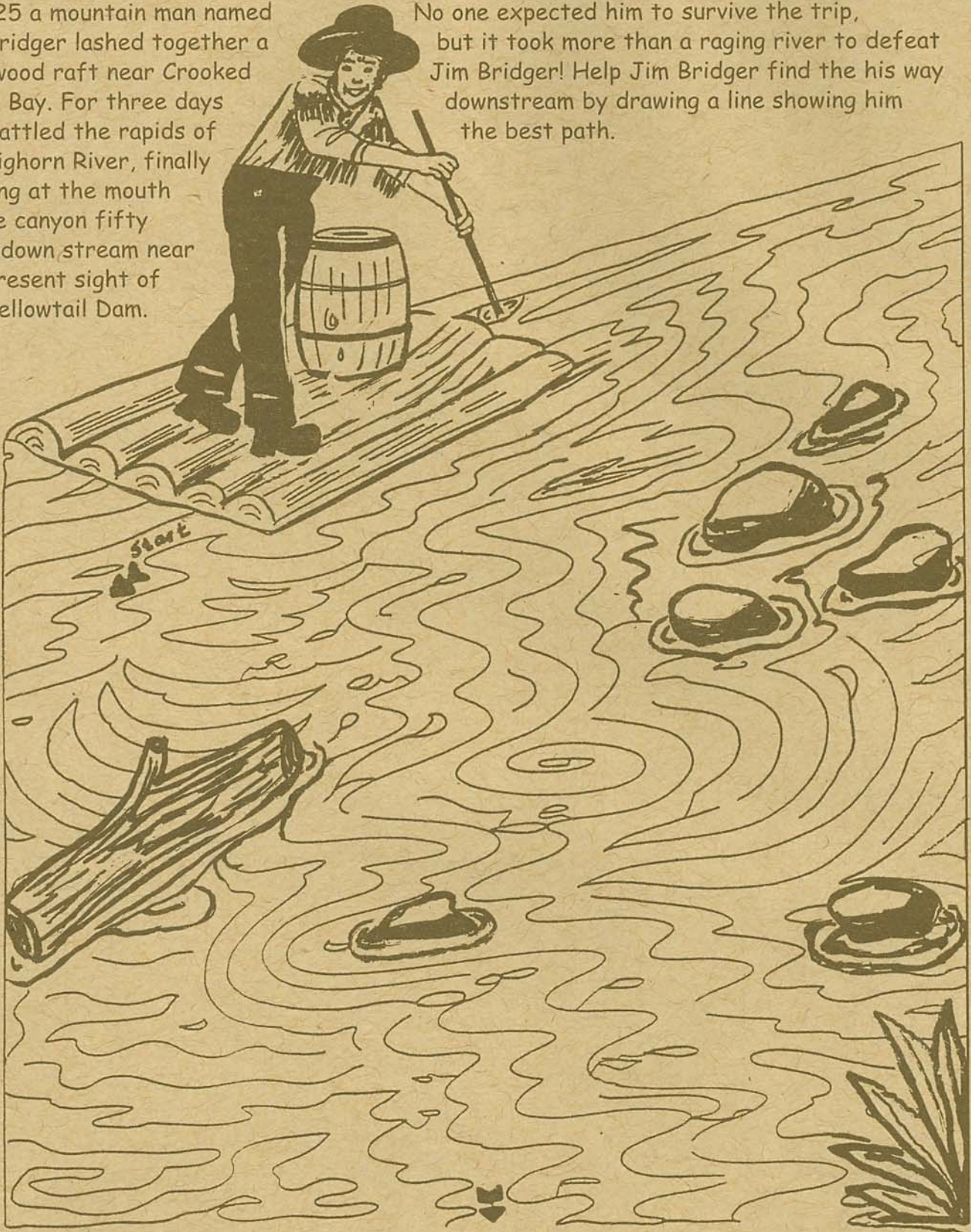




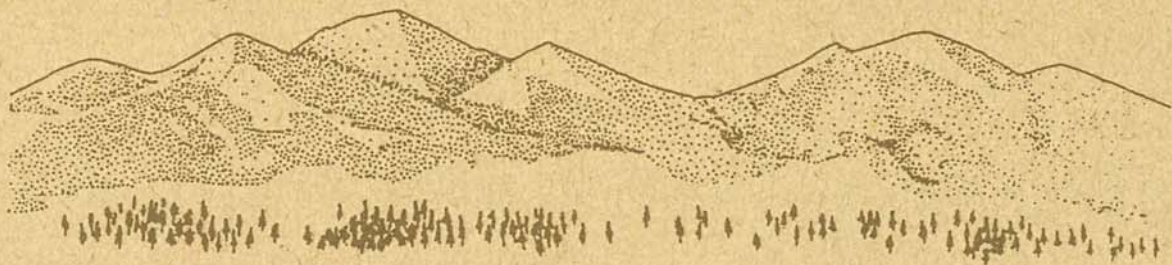
# The Bighorn River Maze

In 1825 a mountain man named Jim Bridger lashed together a driftwood raft near Crooked Creek Bay. For three days Jim battled the rapids of the Bighorn River, finally arriving at the mouth of the canyon fifty miles down stream near the present sight of the Yellowtail Dam.

No one expected him to survive the trip, but it took more than a raging river to defeat Jim Bridger! Help Jim Bridger find his way downstream by drawing a line showing him the best path.







This journal page is written by \_\_\_\_\_  
on \_\_\_\_\_ (date) in Bighorn Canyon National  
Recreation Area.

Find a place in Bighorn Canyon that you really like. What place is it? Why do you like it? What do you see? What sounds do you hear?

If you could be one animal in the park, which one would you be? Why?

The park rangers at Bighorn Canyon are here to protect and preserve the resources in the park for you and future generations to enjoy. Sometimes this means patrolling the lake, telling people about important places, doing research on the animals in the park, or restoring the ranch buildings. If you were a ranger, what would be your favorite part of your job? Why?

Describe one thing that happened on your trip through Bighorn Canyon that you want to remember forever!



# Becoming a Junior Ranger at Bighorn Canyon National Recreation Area

By becoming a Junior Ranger, you recognize that the Bighorn Canyon area is important for both people and wildlife. The Bighorn Sheep, Pryor Mountain Wild Horses, and Mule Deer that live here depend on us to care for this rugged environment so that they can move about safely, find food, and raise their young. As long as you continue to respect and care for nature you can help to protect the future of these magnificent animals and the others who share this land.

## Bighorn Canyon Junior Ranger Pledge

As a Bighorn Canyon Junior Ranger, I promise to do all I can to help preserve and protect the wildlife and natural features of Bighorn Canyon National Recreation Area. I will continue to learn about and respect the natural world even after I leave the Bighorn Canyon Area.

Signature \_\_\_\_\_